

# Link

VOLUME 13, NUMBER 7 OCTOBER 18, 1978

BCIT STUDENT PUBLICATIONS

## TIRED OF THE SAME OLD POPE? CONSIDER GORDON TOM!!!



**"Gord is not a crook..."**

-Richard Nixon

**"A fine, humble man..."**

-Pierre Trudeau

**"A real humanitarian..."**

-Idi Amin Dada

*"A man I would be willing to name in my will..."*

-Howard Hughes (dec.)

This ad placed by the "Gordon as Bishop of Rome" Committee (GABOR)

# BCIT Parking: Problem or Paradise?

By DAVE SHERWOOD

Parking. We've all complained about it at one time or another. Sometimes when we have had to park in the boonies, or in the mud, or wherever, the thought has occurred to us that BCIT's parking situation is on the low end of the pleasure spectrum (nowheresville, to use a quaint expression from yesteryear). But, of course, this is an extremely subjective opinion. It's hard to be objective when your shoes are full of water and you face a half mile walk to your English class. What this article will attempt to do is to analyze BCIT's parking situation and find out whether it is so bad after all.

B.C.I.T. PARKING LOT VIOLATION

Licence No. \_\_\_\_\_ Prov. \_\_\_\_\_

Date \_\_\_\_\_ Time \_\_\_\_\_

The parking lots have been created to serve our employees, visitors and students. The Regulations must be observed in fairness to all.

YOUR CO-OPERATION WILL BE APPRECIATED.

The following infraction is brought to your attention:

1. Unauthorized parking in reserved areas. ☐
2. Unsafe or reckless driving. ☐
3. Blocking laneways, entrances, exits, other vehicles, fire access roadways. ☐
4. Parking permit not displayed. ☐
5. Parking in a lot not authorized by permit. ☐
6. Other. ☐

B.C.I.T. Security Officer



## Nobody knows the problems

### I've seen...

There are several problems that come up quite often when conversation turns to parking:

- Distance (as in, "parking way down at ICBC, eh.")
- Number of spaces (as in, "I come at twenny pas' eight, and no way, yu know")
- Quality of parking ("...in da mud, with no lines what to park between")
- Segregation ("...I pay my six hunnert bucks and park way down a road, and the staff lot ain't even half full, I mean jeez")

### Criteria

No, the criteria is not the place you go to buy your lunch. Criteria are the standards by which we judge things. In our case, we wish to judge BCIT parking. As our criteria we will use other campuses.

Late in the summer, early returning LINK staff sent out questionnaires to eleven lower mainland post-secondary campuses asking them for information on their parking systems. Eight campuses answered, and we are basing our comparisons on information supplied by them (the King Edward and Langara campuses of VCC didn't answer, and neither did UBC).

Of course, differences between campuses do exist. There is no campus in the lower mainland who's situation parallels BCIT's. Cap College is close. But BCIT has unique features.

First of all, BCIT has set boundaries that block any significant expansion plans.

Also, BCIT must take into account the surrounding buildings and their occupants; PVI, the sheriff's department and the BC Buildings Corporation.

We must acknowledge, then, that BCIT is different in some respects than other post-secondary campuses. But there are not enough differences to make a comparison unsuitable.

### It's a long way to purgatory...

BCIT's version of purgatory is parking space down by ICBC (but then we must remember that the average BCIT student's version of exercise is lifting a can of beer... to his mouth). But looking at it objectively, BCIT's parking lot to building distance is not appreciably greater than that of UBC, SFU or some other campuses. It's just that we all have this understandable hatred for pedestrianism once we have laid out the money for an auto. Distance is not a problem we should worry about.

|  | Capilano College   | Douglas College (Langley)  | Douglas College (Maple Ridge)  | Douglas College (New Westminster)   |
|--|--|--|--|---|
| What are your total student and staff populations?                                     | 3200 students<br>300 staff<br>3500 total   | ? students (new campus)<br>360 staff<br>?total                                     | ? students (new campus)<br>145 staff<br>? total                                    | 936 students<br>160 staff<br>1096 total   |
| Do students and staff have segregated parking areas?                                   | NO   | NO   | NO   | NO  |
| What is the ratio of students to parking spaces?                                       |  |  |  |   |
| What is the ratio of staff to parking spaces?  |  |  |  |   |
| What is the ratio of students and staff to spaces if they both park in the same areas? | 600 spaces for 3500 people about 5.8-1   | 100 spaces (new campus—figures not available)                                      | 40 spaces (new campus—figures not available)                                       | 366 + parking spaces (additional lots nearby off campus)<br>3-1                   |
| What is your parking lot price system?   | First come, first served (students, faculty, administration on same basis)<br>FREE | First come, First served (students, faculty, administration on same basis)<br>FREE | First come, first served, (students, faculty administration on same basis)<br>FREE | First come, first served (students, faculty administration on same basis)<br>FREE |

## In the mud, oooh I've got the feeling...

Parking quality is a concern to the average student, and justifiably. For starters, most of the parking areas are gravel or mud (or a combination of the two). Though this may be conducive to growing vegetables, it lacks something when it comes to parking. During wet weather, there is some difficulty in keeping mud and other yecchy stuff from getting all over your shoes. A minor problem.

Of more importance is the lack of lighting in distant parking areas. At night or on early winter mornings, the lots become dark. This would seem to encourage crime—everything from stealing hubcaps to rape. It would seem logical that lighting of parking lots would be a major item on the administration agenda. This is not the case. Neil Chadwick, head of BCIT Safety and Security and head of the Parking Committee, says the money is not available right now. Perhaps it is time for higher levels of administration to consider this radical idea, hmm?

Another irritating problem is the lack of structure to some of the gravel areas of the parking lot. Some drivers seem to find it difficult to park a car in a sensible place if a spot is not surrounded by white lines. In larger areas it is difficult to find a space, some-

times, because of cruddy parking. But this would seem to be a problem that will be around for awhile. After all, you can't paint lines on gravel (well, you can really, but not with any hope of any kind of longevity).

## 1978: A Space Odyssey

Now we get into a real can of worms. The number of spaces available for parking at BCIT numbers about 1,500 for students, and an additional 720 for staff. Look at the student numbers first. Compared to other campuses, BCIT's students seem to be in a very advantageous position: Check that ratio. About one space for every 2½ students (no, there is no such thing as one-half a student, smartass). But we must take into account PVI. Safety and Security counted the spaces used by PVI one day when they were operating and BCIT wasn't. PVI was using over 400 spaces. This reduces the ratio of spaces to BCIT students to 1-3½, still not too shabby. BCIT has not got too bad a situation.

But now look at staff parking. Almost a space for every staff member (as I understand it, PVI staff have their own lots). Would this seem to encourage them to use public transit, as students are continually encouraged? Hardly.

But we're straying into the next topic:

Continued on page 9.

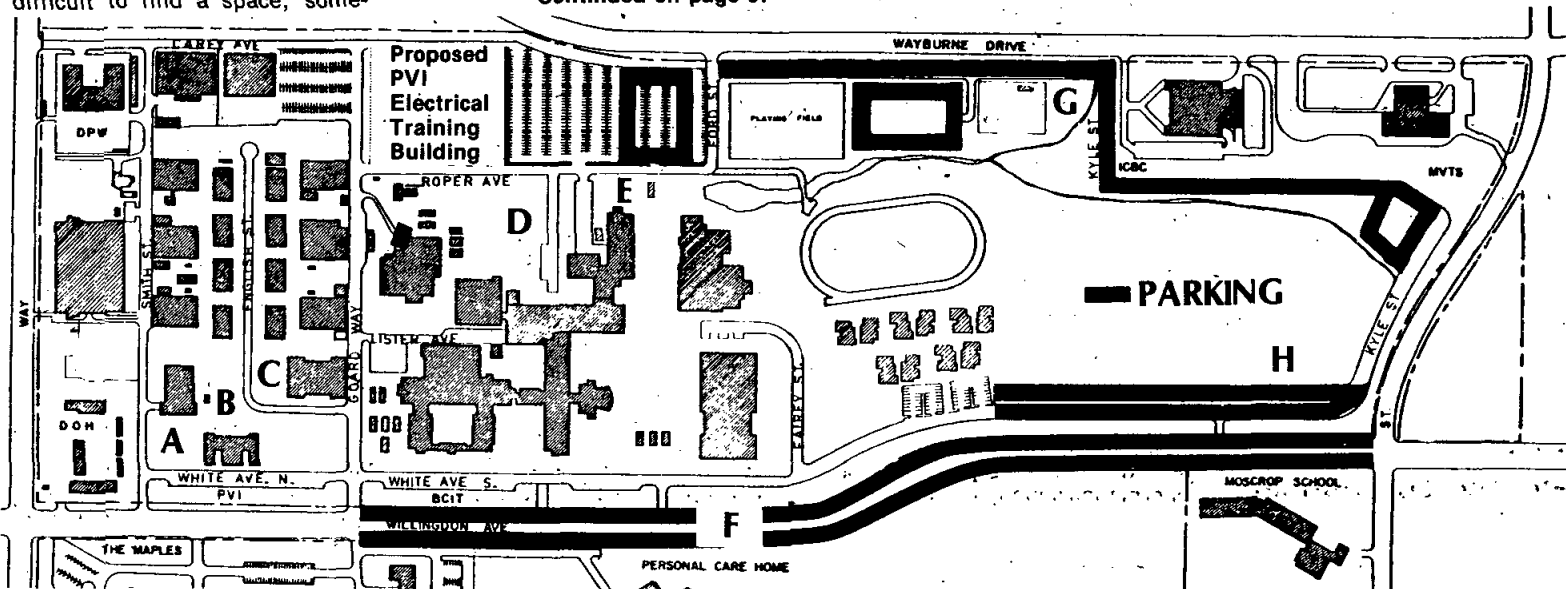
## Recommendations

The Link, as a result of a study of BCIT's parking situation, wishes to make some recommendations that we feel will improve the parking situation here:

- °it is important to the well-being of BCIT students that greater security be available in parking lots. We recommend lights in the darker parking areas.
- °segregated parking is not practical. It is expensive to police, and a nuisance to administer. Desegregation would benefit both administrators and students.
- °whenever money becomes available, BCIT should consider paving lots that are currently gravel or mud, and painting guide lines for parking.

The LINK is interested in receiving student and administrative reaction to this article and recommendations.

RESERVED FOR GREEN PERMITS ONLY



Replacement parking for PVI Electrical Trades Building:

At PVI, lots A, B, and C will provide 100 spaces.

At BVIT, the following lots will be developed:

Lot D with space for 90 cars.  
Lot E with space for 40 cars.  
Lot F with space for 20 cars.  
Lot G with space for 45 cars.  
Lot H with space for 235 cars.  
The total of these and other planned spaces will make 550 new spaces.

| Douglas College (Richmond)   | Douglas College (Surrey)   | Simon Fraser University  | Vancouver Vocational Institute           | BCIT  |
|--|--|--|--|---|
| 800 total  | 2000 students<br>150 staff<br>2150 total   | 8000 students<br>850 staff<br>8850 total   | 2700 students<br>350 staff<br>3050 total | 3700 students<br>815 staff<br>4515 total  |
| NO   | NO   | NO   | YES                                      | YES   |
|  |  |  | 0 for 2700 students                      | 1500 for 3700 students equals 2½-1<br>Taking into account PVI equals 3.5-1                |
|  |  |  | 72 spaces for 350 staff<br>4.8-1         | 720 spaces for 815 people<br>1.1-1  |
| 76 spaces for 800 people<br>10.5-1   | 500 spaces for 2150 people<br>4.3-1  | 3905 spaces for 8805 people<br>2.25-1  |  |   |
| First come, first served (students, faculty, administration on same basis)<br>FREE | First come, first served (students, faculty, administration on same basis)<br>FREE | First come, first served in lots that vary in price from \$5 to \$40 per semester. | not available                            | First come, first served (segregated lots for students)<br>Staff pay for reserved parking |

## EDITORIAL

### Behind the times

Despite what you may read in the LINK every week, there are some good things about BCIT. Though what we have at BCIT may appear at times to be remarkable close to slavery, practises at some other campuses make our administrators look like Abe Lincoln (an American president famed for inventing the Lincoln Continental).

According to a recent issue of *The Martlet*, a University of Victoria student publication, the students have little or no control over whom they may book for entertainment. The administration will not allow acts like Cheech and Chong or Steve Martin to appear on campus because, in their words, these entertainers are too 'controversial.' They will permit only wholesome, family entertainment to be sponsored. The effect is that students are strongly discouraged from organizing or selecting entertainment on their own.

Another major problem they face in booking acts is the availability of the auditorium. It seems the music department has supreme power in deciding who can use the hall, and if they want to practice the night a major act is booked, the act gets cancelled. The administration further complicates matters by raising the costs of using the smaller halls, because they can make more money by holding weddings in them rather than student-oriented events.

As a result, a double bill featuring Tom Waits and Leon Redbone that was to occur last week had to be cancelled. What is their administration's answer to all this? They are bringing in the Irish Rovers. We can all be glad that the administration here at BCIT isn't quite THAT far behind the times.

### More on age

Dear Editor:

Concerning people being kicked out of the SAC at odd times:

It is utterly incomprehensible to me how the SA can receive people's hard-earned money and use them for activities in which these same people are not allowed to participate. To deserve its name, the SAC must be open to all students, whenever it is open at all. As it is now, not even the telephones can be used by underage students, when alcohol is being imbibed in the SAC, if the law is to be abided by.

We over that age where one can apparently no longer have fun without having the brain immersed in some percentage alcohol, must realize that we are the pariahs and must find some locked-off corner to creep into for

our sordid activities. I suggest that the pub be moved to the room across from the hairstylist for the daily ingestion. At dances, some huge speakers could provide the music in the cafeteria, where the drinking can take place behind closed doors. The band could then be in the gym for barefooted, sober dancing, and in the lounge we could have a coffee-and-tea bar for refreshment of the obligate teetotalers.

Another important job for the SA executive is to take part in the democratic process on behalf of the victims of BC's crazy liquor laws. The LAB is just now asking for opinions and experiences of outlet managers and permanent licence holders. I expect to see the input from the SA executive printed in the LINK sometime.

Sincerely yours,

**Dorrit Hansen,**  
4247 Loughheed Highway,  
Burnaby  
2nd year Med Lab

## Link

**'A newspaper's duty is to comfort the afflicted and afflict the comfortable'** —John (not Henry) Winkler

THE LINK is published every Wednesday during the months of September, October, November, January, February, March and April by the Student Publications department of the Student Association of the British Columbia Institute of Technology.

Opinions expressed within are not necessarily those of the BCIT Student Association or (god forbid) the BCIT Administration. Editorial submissions are welcomed. Letters should be typed and signed and may be edited for taste, length and libel.

Deadline for editorial and advertising copy is Friday, 3 p.m. Circulation 2,500. Listed in CARD.

EDITORS: Dave Sherwood, Don Wright, Christer Myberg

3700 WILLINGDON AVENUE, BURNABY, B.C. 434-5734 loc. 615

## Letters to the LINK

### Non-smoker

Dear Editor:

Smoking in the lecture halls is now getting out of hand. Something has to be done about the ignorant assholes who insist on lighting up a cigarette while in a lecture. It's about time the non-smokers stand up and tell these people where to stick their "butts."

**Mike M.**  
[pissed off]

A start might be to sign your letters—editor.

### rugby team

Attention: Rugby Team;

Well fellas, we were not impressed! It wasn't just the show that was too short either! As for never seeing it before—we still haven't! Linda Lovelace need have no fear!

We were ready for you, but obviously you weren't ready for us. It was your challenge and we faced it: Why didn't you? We at least, expected the other end of the bargain to be fulfilled—where were you guys later with the booze? Two disappointments in one night—how much more do you think we can take?

We realize this letter is hitting below the belt, but you have the chance to redeem yourselves at any time!

Dissatisfied Say-lets.

[Editors note: Will the Rugby team continue to fold at the first sign of a real challenge on the field as well as they apparently do off the field?]

## Admissions and the Marks Review Committee

Dear Don:

With regard to the letter asking for information on our admissions requirements, policy on students who failed two or more courses and the role of the Marks Review Committee:

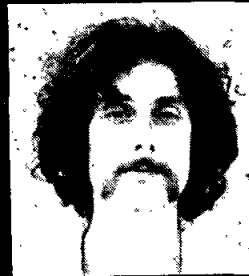
Firstly, on entrance requirements: The Institute has an Admissions Committee which reviews yearly the entrance requirements for each technology. The requirements are reviewed by the Advisory Committee to the technology; they are reviewed by the Deans Committee; approved by the Institute's Executive and promulgated by various means such as the Institute calendars, brochures, information brochures to secondary school counsellors, etc. The Admissions Committee, on receipt of this information, then puts it into practice in its assessment of prospective students.

It is the policy of this Institute in most cases, that students who have failed more than two courses have failed that term or quarter and are required to repeat. The role of the Marks Review Committee is to weigh, as fairly as possible, each student who is under academic duress so that the marks are scrutinized and an unbiased and fair assessment is given. At the discretion of the Marks Review Committee, provisional passes may be given if it is felt that it is in the student's interest and that the student has a chance of success in the following term. Over the years, it has proven that the policies are fair to all concerned.

The following is an extract from the Policy and Procedure manual on the Division Marks Review Committee and Advancement Criteria:

## IN HIS OWN WRITE

by michael kluckner



### What, me worry?

Practically everyone I know had a horrible Friday the 13th, including me. The long-awaited 10cc album 'Bloody Tourists' which Robert bought was so badly warped that the needle looked like a spastic Toller Cranston. Our Saturday typesetter quit (anyone want a job?). Etcetera.

Anyhow, I wouldn't want to come on as if I'm a triskeidekaphobic. Oh no, not that. The light spot was the article the Sun carried on Friday the 13th and superstition, which said that Christians have always hated Fridays because it was the day of Christ's crucifixion! Crucifixion would be an atheist's version of the alleged death of Christ, right?

Jesus, I'm bored. The most exciting thing that's happened in the last week was driving a chisel through my left index finger, and getting to pull the stitches out myself on Friday.

And nobody knows any good jokes. Graham Fane still attempts the odd one, but they're so pathetic his boss Jerry Lloyd claims he can smell them in the main building. Jerry, who I had coffee with on Friday, has this annoying habit of discrediting everything I believe in by agreeing with me constantly. Sheila Nichol ("Snickle") told a good joke in the beer garden on Friday afternoon but it's too visual to attempt to duplicate here. I tried out my definition of catatonia for the benefit of the Psych nurses there (catatonia is apologizing to your small pet) but, not surprisingly, it flopped.

And the FTC fired their leper student chef because he had a finger in too many pies. And one of the candidates in the federal byelection gave a speech to the local leper colony. When he finished they gave him a big hand. Went to Mulvaney's for dinner last week and told the waiter that I wanted duck. He dove to the floor. Why go on?

Oh, yeah, we've got a new phone number. It's 434-5734, local 757, and only works when the switchboard's open. Which reminds me of a joke, which, promise, will be the final one today before I go back to bed. It's in honor of the delegation from the People's Republic of China who came to campus Saturday and were seen Peking into all the corners.

Stop me if you've heard it, but there were two giant panda bears in the Peking zoo called Ling Ling and Sing Sing. Although they'd shared a cage for several months, they'd never made any attempt to mate, which bothered the zookeepers. But one evening Sing Sing started to make amorous advances toward Ling Ling. "Oh, Sing Sing!" she sighed, gazing into his eyes and stroking his hairy, broad chest. "Oh, Ling Ling," he breathed. "That'll be the phone—I'll get it," she said.

#### 4.12.01

The Division Marks Review Committees, which are appointed by their respective Directors, meet to review, change and approve the marks of all students of their Division.

Representative(s) from the Technologies appear before the Committee on behalf of their students. These representatives are selected by the Department Head.

Each Marks Review Committee includes the Director, as chairman; an administrative representative, three Department Heads from the Division, one Core Division Department Head or Division Director and one Department Head from each of the other teaching Divisions.

The Division Marks Review Committee will have available the following information:

1. The Technology set mark sheet.
2. Detailed information from the technology department on each student who does not have a passing grade in all courses.
3. A special mark sheet for each failing mark - 'N' or 'Aggregate'.
4. Student file from Registrar's Office for each student who does not have a passing grade in all courses.

Each student's case is considered solely on his/he individual merit.

In summary, I might say that it is the role of this Institute to pursue academic excellence and to assist students in achieving their career goals. It has been to some students' advantage to withdraw from the day school program and to pursue a partial program through the Continuing Education Day Extension Division. In some of these cases, a student may have had more than two or three failures in his

#### 4.12.02 ADVANCEMENT CRITERIA

The student must have achieved a pass standing in all courses in each term/quarter to successfully complete that term/quarter.

A student who fails one or more courses in a term/quarter may:

- a. be permitted to enroll in the next term/quarter and make up failed course(s) before graduation.
- b. be granted a provisional pass and be permitted to enroll in the next term/quarter. Provisional pass is granted upon the basis that the student will demonstrate an acceptable level of competence in a continuing subject.
- c. Courses given a provisional pass do not receive a numerical grade and are denoted with a "P" on the student's transcript.
- d. fail the term/quarter and not be permitted to continue in the program.

The student who re-registers in a failed term/quarter is required to enroll in all courses until application is made for and approval is granted for credit equivalencies.

- d. be required to achieve satisfactory standing in the failed course(s) before proceeding in the program or graduating.
- e. be granted an adjudicated pass (AP). Students who are granted an adjudicated pass may be permitted to enroll in the subsequent term/quarter without restriction. An (AP) shows on the student transcript opposite a course granted an adjudicated pass.

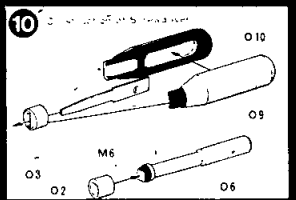
particular program and it is for this reason that he may be a half time student through Day Extension hoping to improve his marks in order to requalify for admission in the next term.

I trust this information is sufficient to satisfy your enquiries.

Sincerely  
**D.M. Svetic**  
Vice Principal-Education



## SHELF DUST from rho



## Scotland revisited

Scotland; kilts, spindly legs, knobby knees, ruddy faces, superb scotch whiskey, heather, peat, low rolling hills, crofters, sheep, thistle, cold clear water, burns tumbling down the hillside, lochs of all shapes and sizes, the Loch Ness Monster, porridge, spurtles, craggy cliffs surmounted by crumbling castles, light rains, bitterly cold mornings, ethereal mists and thistles.

The country inspires an amazing collection of random thoughts.

\*\*\*

Edinburgh is a beautiful old city surrounding a hill surmounted by a huge castle. With the **Good Beer Guide** in hand, a tour of Edinburgh should become a journey through the older parts of the city which nestle into the side of the hill below the castle battlements. Try to avoid it in August as the newer parts of town become carpeted with a solid mass of tourists for tatoo which takes place then. The pub community is very friendly and everyone seems to have a joke or story for anybody willing to listen. Wherever entertainment is going on, the crowd is always encouraged to participate and even expects the privilege. Imagine someone from the audience taking a spell as the lead singer or guitarist for a band such as Bowser Moon.

\*\*\*

Glasgow and Clydebank shall be the subject of another column in the near future or as-soon as a picture for the notes is printed.

\*\*\*

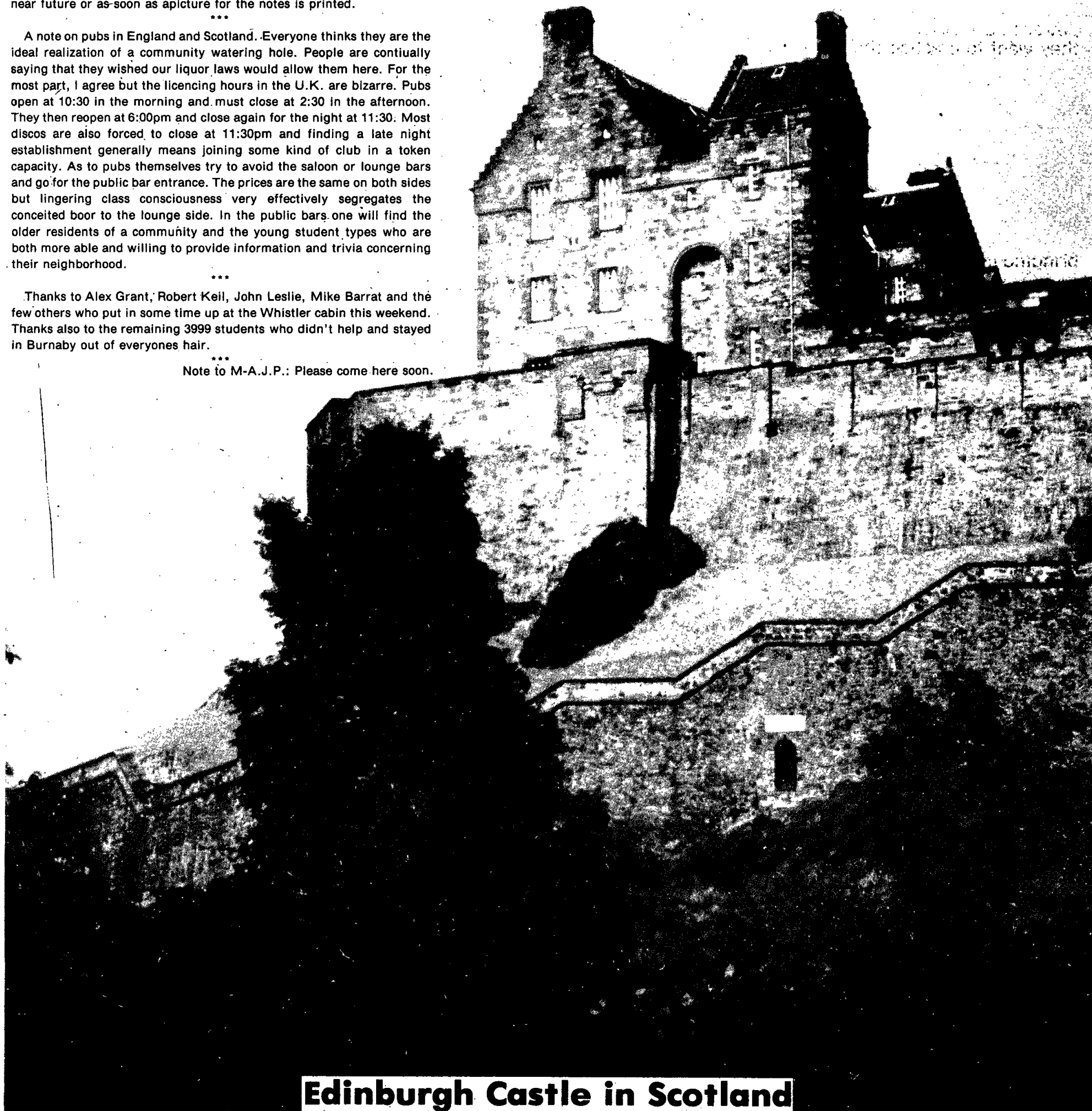
A note on pubs in England and Scotland. Everyone thinks they are the ideal realization of a community watering hole. People are continually saying that they wished our liquor laws would allow them here. For the most part, I agree but the licencing hours in the U.K. are bizarre. Pubs open at 10:30 in the morning and must close at 2:30 in the afternoon. They then reopen at 6:00pm and close again for the night at 11:30. Most discos are also forced to close at 11:30pm and finding a late night establishment generally means joining some kind of club in a token capacity. As to pubs themselves try to avoid the saloon or lounge bars and go for the public bar entrance. The prices are the same on both sides but lingering class consciousness very effectively segregates the conceited boor to the lounge side. In the public bars one will find the older residents of a community and the young student types who are both more able and willing to provide information and trivia concerning their neighborhood.

\*\*\*

Thanks to Alex Grant, Robert Keil, John Leslie, Mike Barrat and the few others who put in some time up at the Whistler cabin this weekend. Thanks also to the remaining 3999 students who didn't help and stayed in Burnaby out of everyone's hair.

\*\*\*

Note to M-A.J.P.: Please come here soon.



Edinburgh Castle in Scotland

# STUDENT ASSOCIATION OF THE BRITISH COLUMBIA INSTITUTE OF TECHNOLOGY

and THIS 'N THAT CAMPUS SHOP

## Financial Statements

June 30, 1978

The fiscal year ending June 30, 1978 was featured by over-spending in the general Student Association budget and the building fund.

Normal operations experienced an overrun of \$8,373—mainly the cost of producing the Yearbook which was not in the original budget. Certain income areas showed a revenue drop which reflect changing school patterns—e.g. pinball room income was down considerably due to a move of the machines to a more isolated area.

The building fund was overspent by \$7,215 which will be made up from the 78-79 assessments.

It is expected that the 78-79 fiscal year will result in a balanced budget and hopefully funds will be left over in the building fund.

Despite a year of heavy expenses, This 'n That Campus Shop showed a net profit of \$2,150 which should increase considerably this year as 77-78 reflected considerable expenses in moving to the present location.

For clarification of any items, please consult this writer in the Student Association offices.



PHIL HENDERSON  
BUSINESS MANAGER

## BALANCE SHEET

AS AT JUNE 30, 1978  
(with comparative figures for 1976 and 1977)

| ASSETS  | 1978             | 1977             | 1976             |
|---|------------------|------------------|------------------|
| <b>CURRENT:</b>                               |                  |                  |                  |
| Cash on hand and in banks                     | \$ 2,197         | \$ 5,914         | \$ 5,327         |
| Accounts receivable                           | 727              | 572              | 5,767            |
| Notes receivable, non-interest bearing        | 814              | 1,836            | 2,467            |
| Inventories—cabaret liquor                    | 2,103            | 972              | 909              |
| —used books                                   | 4,116            | 3,609            | 6,029            |
| —lottery tickets                              | -                | -                | 635              |
| Prepaid expenses                              | -                | 624              | 345              |
|   | <u>\$ 9,957</u>  | <u>\$ 13,527</u> | <u>\$ 21,479</u> |
| <b>FIXED:</b>                                 |                  |                  |                  |
| Furniture, office & printing equipment        | \$ 37,030        | \$ 30,789        | \$ 19,596        |
| Less accumulated depreciation                 | 17,940           | 13,168           | 9,957            |
|   | <u>\$ 19,090</u> | <u>\$ 17,621</u> | <u>\$ 9,639</u>  |
| Whistler Lodge—at cost                        | 42,271           | 42,271           | 40,893           |
|   | <u>\$ 61,361</u> | <u>\$ 59,892</u> | <u>\$ 50,532</u> |
| <b>OTHER:</b>                                 |                  |                  |                  |
| Deferred finance charges                      | \$ -             | \$ 337           | \$ -             |
| Debentures at cost, maturing in 1979 and 1981 | 16,000           | 16,000           | 16,000           |
| Pension fund investments—at cost              | 17,000           | 13,000           | 7,000            |
| Building fund investments—at cost             | 15,000           | -                | -                |
| Advances to This 'n That Campus Shop          | 38,638           | 31,708           | 26,624           |
|   | <u>\$ 86,638</u> | <u>\$ 61,045</u> | <u>\$ 49,624</u> |
|   | <u>\$157,956</u> | <u>\$134,464</u> | <u>\$121,635</u> |
| <b>LIABILITIES</b>                            | <b>1978</b>      | <b>1977</b>      | <b>1976</b>      |
| <b>CURRENT:</b>                               |                  |                  |                  |
| Bank demand loan                              | \$ 43,000        | \$ 10,000        | \$ 12,000        |
| Accounts payable and accrued liabilities      | 11,840           | 13,255           | 10,600           |
| Shinerama fund                                | -                | -                | 91               |
| Telethon fund                                 | 17,822           | -                | 10,000           |
| Deferred income                               | 172              | 365              | 1,105            |
| Current portion of Whistler Lodge bank loan   | 5,000            | 5,000            | 5,000            |
|   | <u>\$ 77,834</u> | <u>\$ 28,620</u> | <u>\$ 38,796</u> |
| <b>OTHER:</b>                                 |                  |                  |                  |
| Whistler Lodge bank loan—less current portion | \$ 6,000         | \$ 11,000        | \$ 17,000        |
| Open House reserve                            | 1,000            | -                | -                |
| Pension fund                                  | 21,929           | 13,116           | 8,254            |
| Building fund                                 | (7,215)          | 14,947           | 5,719            |
|   | <u>\$ 21,714</u> | <u>\$ 39,063</u> | <u>\$ 30,973</u> |
| <b>MEMBERS' EQUITY</b>                        |                  |                  |                  |
| Beginning balance                             | \$ 66,781        | \$ 51,866        | \$ 29,301        |
| Excess income over expenditure for the year—  |                  |                  |                  |
| Statement II                                  | (8,373)          | 14,915           | 22,565           |
| Ending balance                                | <u>\$ 58,408</u> | <u>\$ 66,781</u> | <u>\$ 51,866</u> |
|   | <u>\$157,956</u> | <u>\$134,464</u> | <u>\$121,635</u> |

## STUDENT ACTIVITIES

FOR THE YEAR ENDED JUNE 30, 1978

### ADMINISTRATION:

|   |                 |          |
|---|-----------------|----------|
| Honoraria   | \$ 9,273        |          |
| Salaries and benefits                                     | 34,948          |          |
| Audit   | 632             |          |
| Parking   | 70              |          |
| Insurance   | 2,221           |          |
| Repairs and maintenance                                   | 172             |          |
| Printing and stationery                                   | 2,219           |          |
| Telephone and telegraph                                   | 1,421           |          |
| Memberships   | 173             |          |
| Travel  | 1,492           |          |
| Bank charges, interest                                    | 791             |          |
| Office photocopying                                       | 2,704           |          |
| Legal   | 825             |          |
| Expenses passed by executive or council                   | 3,241           |          |
| Miscellaneous   | 510             |          |
|   | <u>\$60,692</u> |          |
| Deduct management fee charged to This 'n That Campus Shop | 2,400           | \$58,292 |

### GRANTS TO SOCIETIES:

|             |        |       |
|-------------|--------|-------|
| Business    | \$ 605 |       |
| Engineering | 1,041  |       |
| Health      | 447    | 2,093 |

### V.P. INTERNAL:

|                         |  |     |
|-------------------------|--|-----|
| Elections and referenda |  | 498 |
|-------------------------|--|-----|

### SOCIAL ACTIVITIES:

|                             |          |        |
|-----------------------------|----------|--------|
| General                     | \$ 9,346 |        |
| Cabaret—per Schedule II     | (1,094)  |        |
| Films                       | 1,497    |        |
| Food service operating loss | 2,949    | 12,698 |

### CLUB ACTIVITIES:

|                               |        |       |
|-------------------------------|--------|-------|
| Chinese Students' Association | \$ 590 |       |
| Outdoors club                 | 671    |       |
| Band                          | 1,259  |       |
| I.V.C.F.                      | 300    |       |
| Scuba                         | 300    |       |
| Wrestling                     | 220    | 3,340 |

### V.P. EXTERNAL

|                    |        |       |
|--------------------|--------|-------|
| Public Relations   | \$ 561 |       |
| Charities          | 409    |       |
| Open house—1978-79 | 1,000  | 1,970 |

### CONFERENCES AND MEETINGS

2,822

### SPORTS

|             |  |        |
|-------------|--|--------|
| Intramurals |  | 14,134 |
|-------------|--|--------|

### PUBLICATIONS:

|                         |          |                  |
|-------------------------|----------|------------------|
| Salaries                | \$14,050 |                  |
| Link expenses           | 7,640    |                  |
| Link wages              | 6,307    |                  |
| Photography department  | 472      |                  |
| Repairs and maintenance | 712      |                  |
| Directory printing      | 1,809    |                  |
| Supplies                | 2,139    |                  |
| Yearbook                | 11,898   | \$45,027         |
| Less revenue            |          | <u>18,043</u>    |
|                         |          | <u>26,984</u>    |
|                         |          | <u>\$122,831</u> |

## CABARET OPERATIONS

FOR THE YEAR ENDED JUNE 30, 1978  
(with comparative figures for 1976 and 1977)

|  | 1978             | 1977             |
|--|------------------|------------------|
| <b>INCOME:</b>   |                  |                  |
| Bar sales and net door proceeds  |                  |                  |
| (cost of bands deducted from gross door receipts)  | <u>\$121,189</u> | <u>\$100,755</u> |
| <b>EXPENSES:</b>   |                  |                  |
| Cost of sales  | \$ 72,204        | \$48,211         |
| Student wages  | 28,877           | 30,485           |
| Tarpaulin and table rentals  | 390              | 412              |
| Cups, beer mugs and supplies   | 8,012            | 6,534            |
| Advertising  | 725              | 2,621            |
| Equipment  | -                | -                |
| Janitor  | 2,700            | -                |
| Miscellaneous  | 2,629            | 2,538            |
|  | <u>\$115,537</u> | <u>\$ 90,801</u> |
| <b>NET INCOME FROM OPERATIONS</b>  | \$ 5,652         | \$ 9,954         |
| Less—special events profits returned to student technologies, charities, alumni associations, etc. | 4,558            | 10,089           |
| <b>NET INCOME [LOSS] FOR THE YEAR</b>  | <u>\$ 1,094</u>  | <u>\$ (135)</u>  |

*G. C. Unger & Co.*

CERTIFIED GENERAL ACCOUNTANTS

North Whalley Center  
10769 - 135 Street  
Surrey, B.C. V3T 4C8

August 28, 1978

### AUDITORS' REPORT

We have examined the balance sheet of the British Columbia Institute of Technology Students' Association and the This 'n That Campus Shop as at June 30, 1978 and the statements of earnings and members' equity for the year then ended. Our examination was made in accordance with generally accepted auditing standards, and accordingly included such tests and other procedures as we considered necessary in the circumstances.

In our opinion, these financial statements present fairly the financial position of the association as at June 30, 1978 and the results of its operations for the year that ended in accordance with generally accepted accounting principles applied on a basis consistent with that of the preceding year.

*G. C. Unger & Co.*

CERTIFIED GENERAL ACCOUNTANTS

## STATEMENT OF REVENUE AND EXPENDITURE

FOR THE YEAR ENDED JUNE 30, 1978  
(with comparative figures for 1976 and 1977)

|   | 1978              | 1977             | 1976             |
|---|-------------------|------------------|------------------|
| <b>REVENUE:</b>                                       |                   |                  |                  |
| Activity fee  | \$104,892         | \$102,474        | \$ 95,223        |
| Vending machines                                      | 11                | 253              | 9,748            |
| Games   | 8,229             | 10,878           | 8,508            |
| Barber Shop rent                                      | 1,485             | 1,350            | 1,350            |
| Investment income                                     | 3,250             | 3,123            | 2,932            |
| Rental of Student Activity Centre facilities          | -                 | -                | 2,380            |
| Used book store                                       | 1,049             | 444              | 1,544            |
| Administrative grant from PVI                         | -                 | -                | 500              |
| I.D. System   | -                 | -                | 813              |
| Photocopy machines                                    | -                 | 3,243            | 1,580            |
| Sale of assets  | -                 | 352              | 910              |
| Rental of LINK equipment                              | -                 | 3,504            | -                |
| Open house magazine grant                             | -                 | -                | -                |
| This 'n That campus shop—per statement                | 2,150             | 3,274            | 4,232            |
| Miscellaneous   | 842               | 999              | 111              |
|   | <u>\$121,910</u>  | <u>\$133,804</u> | <u>\$130,047</u> |
| <b>EXPENDITURE:</b>                                   |                   |                  |                  |
| Student activities—Schedule I                         | \$122,831         | \$112,596        | \$100,111        |
| Whistler operations                                   | 2,680             | 1,888            | 4,962            |
| Depreciation—equipment                                | 4,772             | 4,405            | 2,409            |
|   | <u>\$130,283</u>  | <u>\$118,889</u> | <u>\$107,482</u> |
| <b>EXCESS OF INCOME OVER EXPENDITURE FOR THE YEAR</b> | <u>\$ (8,373)</u> | <u>\$ 14,915</u> | <u>\$ 22,565</u> |

## BUILDING FUND

FOR THE YEAR ENDED JUNE 30, 1978

|                          |              |                   |
|--------------------------|--------------|-------------------|
| <b>BEGINNING BALANCE</b> | \$14,947     |                   |
| <b>RECEIPTS:</b>         |              |                   |
| Student fees             | \$13,515     |                   |
| BCIT                     | <u>3,000</u> | <u>16,515</u>     |
|                          |              | \$31,462          |
| <b>EXPENDITURES:</b>     |              |                   |
| Cafeteria                | \$ 8,028     |                   |
| Lobby                    | 21,090       |                   |
| Food area                | 3,343        |                   |
| Beer area improvements   | <u>6,216</u> | <u>38,677</u>     |
| <b>ENDING BALANCE</b>    |              | <u>\$ (7,215)</u> |

## THIS 'N THAT CAMPUS SHOP BALANCE SHEET

AS AT JUNE 30, 1978  
(with comparative figures for 1976 and 1977)

|  | 1978            | 1977            | 1976            |
|--|-----------------|-----------------|-----------------|
| <b>ASSETS</b>                                      |                 |                 |                 |
| <b>CURRENT:</b>                                    |                 |                 |                 |
| Cash on hand                                       | \$ 509          | \$ 450          | \$ 325          |
| Accounts receivable and prepaid expenses           | 3,980           | 5,779           | 1,959           |
| Inventory—at lower of cost or net realizable value | <u>66,395</u>   | <u>31,822</u>   | <u>36,025</u>   |
|  | <u>\$70,884</u> | <u>\$38,051</u> | <u>\$38,309</u> |
| <b>FIXED:—at cost</b>                              |                 |                 |                 |
| Fixtures and equipment                             | \$30,276        | \$16,847        | \$13,594        |
| Less accumulated depreciation                      | <u>12,410</u>   | <u>7,943</u>    | <u>5,717</u>    |
|  | <u>\$17,866</u> | <u>\$ 8,904</u> | <u>\$ 7,877</u> |
|  | <u>\$88,750</u> | <u>\$46,955</u> | <u>\$46,186</u> |
| <b>LIABILITIES</b>                                 |                 |                 |                 |
| <b>CURRENT:</b>                                    |                 |                 |                 |
| Bank overdrafts and loans                          | \$23,617        | \$ 622          | \$ 6,146        |
| Accounts payable and accrued liabilities           | <u>26,495</u>   | <u>14,625</u>   | <u>13,416</u>   |
|  | <u>\$50,112</u> | <u>\$15,247</u> | <u>\$19,562</u> |
| <b>STUDENT ASSOCIATION EQUITY</b>                  |                 |                 |                 |
| Beginning balance                                  | \$31,708        | \$26,624        | \$ 7,709        |
| Net advances during the year                       | 4,780           | 1,810           | 14,683          |
| Net income—Statement II                            | <u>2,150</u>    | <u>3,274</u>    | <u>4,232</u>    |
| Ending balance                                     | <u>\$38,638</u> | <u>\$31,708</u> | <u>\$26,624</u> |
|  | <u>\$88,750</u> | <u>\$46,955</u> | <u>\$46,186</u> |

## STATEMENT OF OPERATIONS

FOR THE YEAR ENDED JUNE 30, 1978  
(with comparative figures for 1976 and 1977)

|                                      | 1978             | 1977             | 1976             |
|--------------------------------------|------------------|------------------|------------------|
| <b>SALES</b>                         | <u>\$279,900</u> | <u>\$263,899</u> | <u>\$235,080</u> |
| <b>COST OF SALES</b>                 | <u>\$214,865</u> | <u>\$209,384</u> | <u>\$186,143</u> |
| <b>GROSS PROFIT ON SALES</b>         | <u>\$ 65,035</u> | <u>\$ 54,515</u> | <u>\$ 48,937</u> |
| <b>OPERATING EXPENSES:</b>           |                  |                  |                  |
| Wages and benefits                   | \$ 46,906        | \$ 40,803        | \$ 31,431        |
| Management fee                       | 2,400            | 2,400            | 3,600            |
| Supplies                             | -                | -                | -                |
| Advertising                          | 1,346            | 490              | 1,611            |
| Alarm system                         | 659              | 642              | 752              |
| Audit fee                            | 495              | 600              | 450              |
| Bank charges, interest               | 1,822            | 149              | 425              |
| Depreciation                         | 4,467            | 2,226            | 1,969            |
| Equipment rental and maintenance     | -                | -                | 748              |
| Insurance                            | 1,344            | 701              | 900              |
| Telephone                            | 501              | 319              | 273              |
| Travel and conferences               | 2,351            | 1,776            | 811              |
| Miscellaneous                        | 594              | 1,135            | 1,735            |
|                                      | <u>\$ 62,885</u> | <u>\$ 51,241</u> | <u>\$44,705</u>  |
| <b>NET INCOME FOR THE YEAR ENDED</b> | <u>\$ 2,150</u>  | <u>\$ 3,274</u>  | <u>\$ 4,232</u>  |

## NOTES TO THE FINANCIAL STATEMENTS

### 1. ACCOUNTING POLICIES

(a) Inventories were valued at the lower of cost or realizable value.  
(b) Fixed assets are stated at cost. Cabaret equipment is expensed immediately as are alterations to the Student Activity Centre. Office and printing equipment as well as store alterations and fixtures are depreciated on the declining balance basis at 20 per cent per annum. No depreciation was provided on Whistler Lodge.

### 2. BANK LOANS

Bank loans are partially secured by debentures totalling \$31,000. The Whistler Mountain Lodge loan is repayable at \$5,000 principal per annum.

### 3. CONTINGENT LIABILITIES

Letters of Guarantee which have been issued totalling \$4,000 expire in September, 1978. There is also a forward exchange contract to purchase \$10,000 U.S. between October 2, 1978 and November 2, 1978 at 14.81 per cent.

### 4. COMPARATIVE FIGURES

The 1977 comparative figures were reported upon by another firm of auditors and therefore our audit report does not extend to these amounts.

1976

\$82,184

\$47,626

18,849

2,666

5,099

1,847

2,101

\$78,188

\$ 3,996

4,843

\$ (847)

# THE ROCKPILE

by Don Wright



## Al Stewart and friends

To many, the name **Al Stewart** conjures up the vision of a fellow seated atop a stool playing an acoustic guitar and singing songs heavily laced with early European history. To others, the strange "Year of the Cat" album is the only Al Stewart they know. His first North American release, "Past, Present and Future" established him as a folk singer to be reckoned with. Two of the cuts on that album became FM radio classics—the "Roads to Moscow" and "Nostradamus" tracks, eight and ten minutes long respectively. The album featured his gentle, subdued voice and acoustic guitar work in addition to lyrics based on events from European history.

That was in 1974. A year later saw the release of his second North American album, which was actually his sixth album at home in Britain. It was entitled "Modern Times." There were no earth-moving epics on that one, however, he really made the grade with his next release, "Year of the Cat," which became one of the top albums in 1977. In addition to the chart-topping title song, this album contains most of Stewart's finest material.

The concert was billed as 'Al Stewart and Friends,' and his first friend was folk-singer Krysia Kristienne. Krysia has provided back-up vocals on some of his albums. She did a number of songs featuring her very strong voice before being joined onstage by Al Stewart, who immediately went into "On the Border," one of the many he did from the "Year of the Cat" album. In fact, by the end of the night he had performed almost all of the songs on that album, as well as many from his new album "Time Passages."

Stewart has surrounded himself with seven musicians of the highest calibre. However, he has not done this in an effort to cover any deficiencies on his part. Rather, each in some way complements Stewart's own special talents. Adam Yuimen's searing lead guitar was very prominent in many of the more progressive rock numbers, as were saxophonist Phil Kenzie's excellent contributions.

Between the two, they were able to lay the foundations for Al Stewart's transformation from folksy singer to a rock 'n' roller. While maintaining his soft voice for his mystifying lyrics, the music itself has moved away from the acoustic Al Stewart circa "Past, Present and Future" to the electrified rock and roll of Al Stewart today. He went so far as to leave out the two songs that more or less established him on this continent, namely the aforementioned "Roads to Moscow" and "Nostradamus." The length and acoustic complexity of the two songs combined with his apparent striving for the image of a more progressive rock 'n' roller likely caused them to be forsaken.

It was, nonetheless, a first class performance worthy of selling out the QE Theatre for both shows. Still, it would have been nice to hear him do "Roads to Moscow...."

### BOTTOM HALF OF THE ROCKPILE

By now you've probably heard at least one of the two hit singles from the Cooper Brothers' debut album. "Rock 'n' Roll Cowboys" tells a tale of life on the road, and "The Dream Never Dies" is one of the better sounding songs on the current charts. The latter features the band's rich vocal harmonies.

After being blown away by their great sound, you may have asked, just who are the Cooper Brothers? Well, firstly, they are a Canadian group from Ottawa, secondly, the seven members of the band have played with each other in various combinations over the last ten years, before becoming the overnight success they may appear to be. The present line-up has been together for about four years, mainly touring Ontario and the Maritimes, so their upcoming appearance in the Commodore Ballroom will be their first time in Vancouver.

Their slightly country-rock sound has led many to suggest that they are Canada's answer to the **Eagles**; however, in a cover story in Music Express Dick Cooper explains that "I suppose we're more like the Eagles than Kiss, but that's only one aspect of the group.... The Eagles' influence is a definite part of the band, but it's not the whole thing." The Cooper Brothers are Brian Cooper on bass, Dick Cooper on guitars (he also writes the lyrics), Terry King on steel guitar, Don Bregg on lead vocals, Al Serwa on keyboards, Glenn Bell doing drums and percussion, and Darryl Alguire doing percussion and harmonies. Again, they will be at the Commodore on October 25 in yet another Perrascope Concert Productions and FM 99 collaboration known as Cheap Thrills. It is actually half of a two-part event, the second part being a concert showcasing **City Boy** (of the song "5705") on the 30th. Truly a cheap thrill, the tickets go for \$5.99 for two concerts, or \$3.99 a shot.

**LATE FLASH:** the Atlanta Rhythm Section will be at the UBC Warm Memorial gym on November 15.

## THEATRE By Royce Warman

### The Boys From Brazil

By ROYCE WARMAN

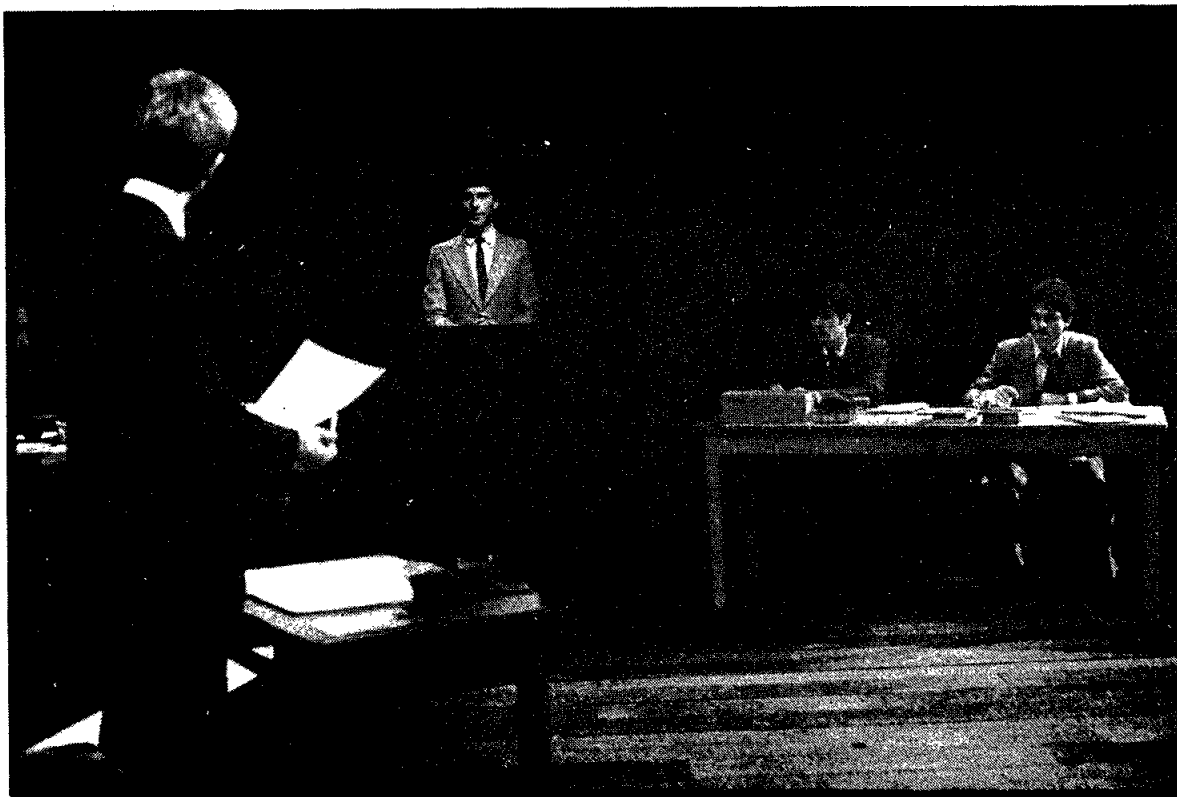
A few months ago when the controversy over cloning was at its peak I commented to a friend that it wouldn't be long before there was a feature length movie on the topic.

"The Boys from Brazil" is that movie. Combining Nazis and cloning was predictable and is a disgusting attempt to con the public into spending money. The only suspense in the movie is how long it will take the audience to figure out the plot. The first hour of the movie was taken up in film footage which requires the entire second half to piece together.

Gregory Peck and several of the other big name actors do a very poor job of playing their roles as Nazis trying to make a comeback.

The only actor worth the title in the movie is Lawrence Olivier, who plays an aging Nazi hunter who likes to work alone. During his hunt for a clue to what the Nazi gang is up to he is forced to work with younger men who belong to the Jewish Defence League. Before the incident portrayed is over he is forced to destroy his information because the younger men wish to use it for a mass killing.

The Boys from Brazil is a poor attempt by Hollywood to entertain people with suspense and big names in order to make big profits. This movie is one of the worst to come along this year, and after seeing it a lot of people will leave the theatre feeling they have just wasted time and money.



## PLAYPEN

By LEITH FYFE

Studio 58 on the Langara College Campus has the distinction of having been the first Canadian theatre group to present "The Biko Inquest."

The actual Inquest was held in South Africa last November, and delved into the circumstances surrounding the death of black South African leader Stephen Biko while in the custody of the Security Police. The purpose of the Inquest was to determine whether or not Biko's death was caused by "an act of omission on the part of doctors, police or prison officials."

The script is an abbreviated transcript of the 13-day inquest, condensed to two hours, and officially translated to English from the original Afrikaans.

In director Antony Holland's notes on the program he states that he "made no attempt to use special theatrical lighting, make up to age the actors, or to reproduce the Afrikaans accent." The importance is, in his opinion, "the understanding of the script."

Thus, the set consisted merely of three tables, seating the prosecuting and State (or defense) counsels, and the two presiding Commissioners, and a podium for the use of the witnesses. The remainder of the cast was seated in the front row of the theatre, each assuming his position behind the podium in turn. The house lights remained up during the entire performance.

Eleven of the fourteen man cast are enrolled in the VCC Theatre Arts program, while the other three were returning graduates of the program. Most notable was Jon Bryden, one of the graduates.

Bryden played Kentridge, prosecuting counsel, representing relatives of Biko. In a forceful performance as Kentridge, Bryden brought forward members of the regular and Security Police of South Africa, as well as doctors who had "treated" Biko during the month preceding his death.

The facts brought out showed that Biko had been arrested on August 19, 1977, for being outside his residential town. On September 6 he was handed over to the Security Police. Sometime between the 6th and his death on the 12th of September, Biko sustained multiple injuries, including a cut on his head, which caused brain damage and was

## "The Biko Inquest" at Studio 58

ultimately responsible for his death.

Bryden's character often pushed the witnesses to the limit in order to secure this knowledge, as well as the details of Biko's custody.

During most of his custody Biko was chained by handcuffs and leg irons to the bars of a cell. He was kept nude 'for his own protection,' and given a mat to lie on and a blanket to cover himself with. Gerry Nairn, who played St. Goosen of the Security Police, claimed that Biko had caused his own head injury by banging his head against the cell wall.

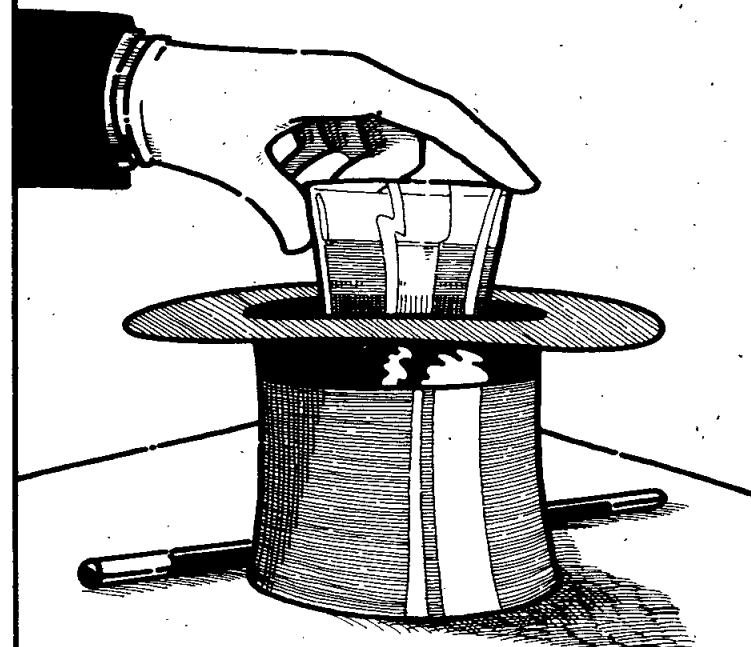
Kentridge managed to find varying degrees of falsehood in nearly all of the witnesses' testimonies. Most astounding were the testimonies of the doctors who had visited Biko in prison. Evidence inferred that the policies of the Security Police had caused doctors brought in to treat Biko to ignore his obvious injuries. Despite evidence to the contrary, Goosen's claims were backed to the hilt by supposedly ethical medical practitioners.

The play is entirely non-fiction, but the players manage to entirely eliminate the expected amount of tedium from a real-life courtroom situation. The play is enlightening, and Kentridge's efforts are often touching. Above all, it is frightening. After what appears to be conclusive evidence that most of the witnesses are responsible, in different ways, for Biko's death, the Commissioners hand down a verdict to the contrary.

It is not surprising, rather, it is saddening and angering to realize that such atrocities do take place. Biko has been called a revolutionary, and a martyr. After seeing this play, I would describe him as a misplaced and mistreated man.

Studio 58 has taken a controversial issue and turned it into a controversial piece of theatre. The run ended Oct. 14, but I urge you to be on the lookout for upcoming presentations of the VCC program. If director Holland can bring the same insight into further productions, an exciting season could easily lie ahead.

## A trick shot



When you're drinking tequila, Sauza's the shot that counts. That's why more and more people are asking for it by name.

### TEQUILA SAUZA

Number One in Mexico.  
Number One in Canada.



### WE CAN FIX IT!!

TELEPHONE ANSWERING MACHINES  
CALCULATORS  
DICTIONARY EQUIPMENT

all makes and models

CAL-Q-TRONICS  
4847 Kingsway, Burnaby  
438-6496 [upstairs]



Parking. Continued from page 3.

## Segregation

Check out the stats, gang. Out of the nine campuses in the survey, only two have segregated staff-student parking. VVI is situated downtown, and has no student parking and very little staff parking. The other is BCIT.

You may have read a LINK editorial a few weeks ago that complained about the highschool atmosphere of BCIT. It ruffled some feathers. Well, we're going to ruffle again. What makes BCIT different from all the other post-secondary campuses where students and teachers park together? The answer is not a darn thing.

Other campuses have found the best system, offering the least problems and administrative costs, is to let students and staff park in the same areas. And yet

good old reactionary BCIT trucks along, secure in the knowledge that the real reason that we are all here is to keep students in their place.

During the course of distributing, receiving and compiling questionnaires, the same statement was heard more than once: "...well, there's no perfect way to run parking, but unsegregated parking seems to work the best."

Ken Hughes of Capilano College noted that their system of unsegregated parking at no cost seemed to work the best of all the alternatives tried.

But, of course, why should we listen to him? We know so much more than he does...don't we?

## Should we pay?

To answer the above question, we must collectively decide an-

other question. Does BCIT want to encourage the use of alternate methods of getting to the campus? This reporter's feeling is yes, we do. With the bus pass being instituted by BC Hydro, there are absolutely no grounds to the belief that taking your car is cheaper or more convenient for anyone in Hydro's Zone One. True, the car may be faster, but the bus has everything else going for it.

I am not going to answer the pay question directly. It deserves an article all its own. But think about it.

## When and where

Parking lost to the new PVI building on the east side of the campus will be replaced in other areas. See the map. Replacement parking is at a greater distance, in most cases, from the campus. But closer areas are impractical.

The Department of Education has scotched plans for additional parking west of Willingdon.

Room for expansion of the residence rules out the area just south of Maquinna.

The Department of Athletics has refused to consider paying over BCIT's second field just south of the current major paved area.

Hilly terrain and a creek would make the conversion of the area just south of the track rather expensive.

## Nurses and faculty send out challenge to run

Saturday, November 5, will see a group of BCIT students and faculty participating in a six mile run around the Stanley Park sea wall. The group will be among several thousand entrants in the annual James Cunningham Memorial Seawall Race. The event is open to both serious competitors and less intense, but equally dedicated joggers.

This is the second year of BCIT participation. Last year several faculty were joined by eight nursing students who all performed well with most of the group managing to finish the race. This year an even larger group of nursing students will prance over the course. Some will be out to beat as many runners as they can while others will be out to establish a personal standard of performance. Most of the students will be including the run in a person fitness management program offered for the first time as a part of the nursing curriculum.

As was the case last year, few, if any, students from BCIT's

other technologies will be represented in this year's run. The nursing students are predominantly female but should any male or otherwise non-nursing student wish to join the nursing contingent all will be welcome. This, of course, will take a certain amount of courage. Certainly most of the males at BCIT will be reluctant to get themselves into the embarrassing position of being seen, one mile into the race, bent over with exhaustion, beer bellies retching violently, while the girls glide lithely by. However, should anyone out there want to take the risk, and incidentally score a few PR points for your technology, get yourself registered before October 20.

Sign up with Tom Nowak, office D418 or with the Athletics office. If participation looks good the Athletics department may lay on a bit of lunch and refreshment in the SAC after the race. Any takers?

## Financial Awards

The staff at the Financial Awards Office has heard many students express their dissatisfaction with the allowances and expectations of the B.C. Student Assistance Program; that is the Canada Student Loan and B.C. government Grant. We would like to attempt to impress on the federal and provincial authorities the need for change in the regulations surrounding this collective program.

Evidence of the need to increase allowances will be necessary to support an appeal to

government officials. You can help us obtain that evidence by volunteering some accurate facts about your living costs.

Please take a few minutes to come down to the Financial Awards Office located in Trailer A-3 or to the Counselling Centre, D205 of the 1976 building, where we will have a questionnaire we would like you to fill out. We would appreciate replies from all students whether or not you applied for B.C. Student Assistance; whether or not you need more money.

## Wanna eat out, eh?

Don

Okay guys, (you girls can read this as well, if you want to) so now you're ready to take out that foxy chick (this article is really sexist) you met at last weeks' pub out to dinner. The question, of course, is where. You're from up-country (Port Coquitlam or further), maybe both of you are from out-of-town. To start with, eliminate from your list of possibilities all McDonalds, Whitespots, and A&Ws; you're out of high school now. Besides, the new woman in your life won't be too impressed with the old 'two all beef patties...' bit, even if you're a student on a tight budget.

So, what do you do? Well, you could ask around and find out where the locals go. The trouble is, you ask them how the prices are and they'll likely try to avoid giving you a straight answer. Nobody wants to admit they actually paid \$12 for a steak, even if it did come with a line of dancing girls and flashing lights. Instead, they'll reply "Oh, they're reasonable". That kind of answer scares the hell out of you though. You thought five dollars was more than reasonable for a book until you had to buy seven or eight texts at \$20 a title.

If you think I'm going to tell you where the best food in town is, forget it. There was just no way I could convince publications to finance a tour of the local eating establishments. I even offered to keep it down to a party of four.

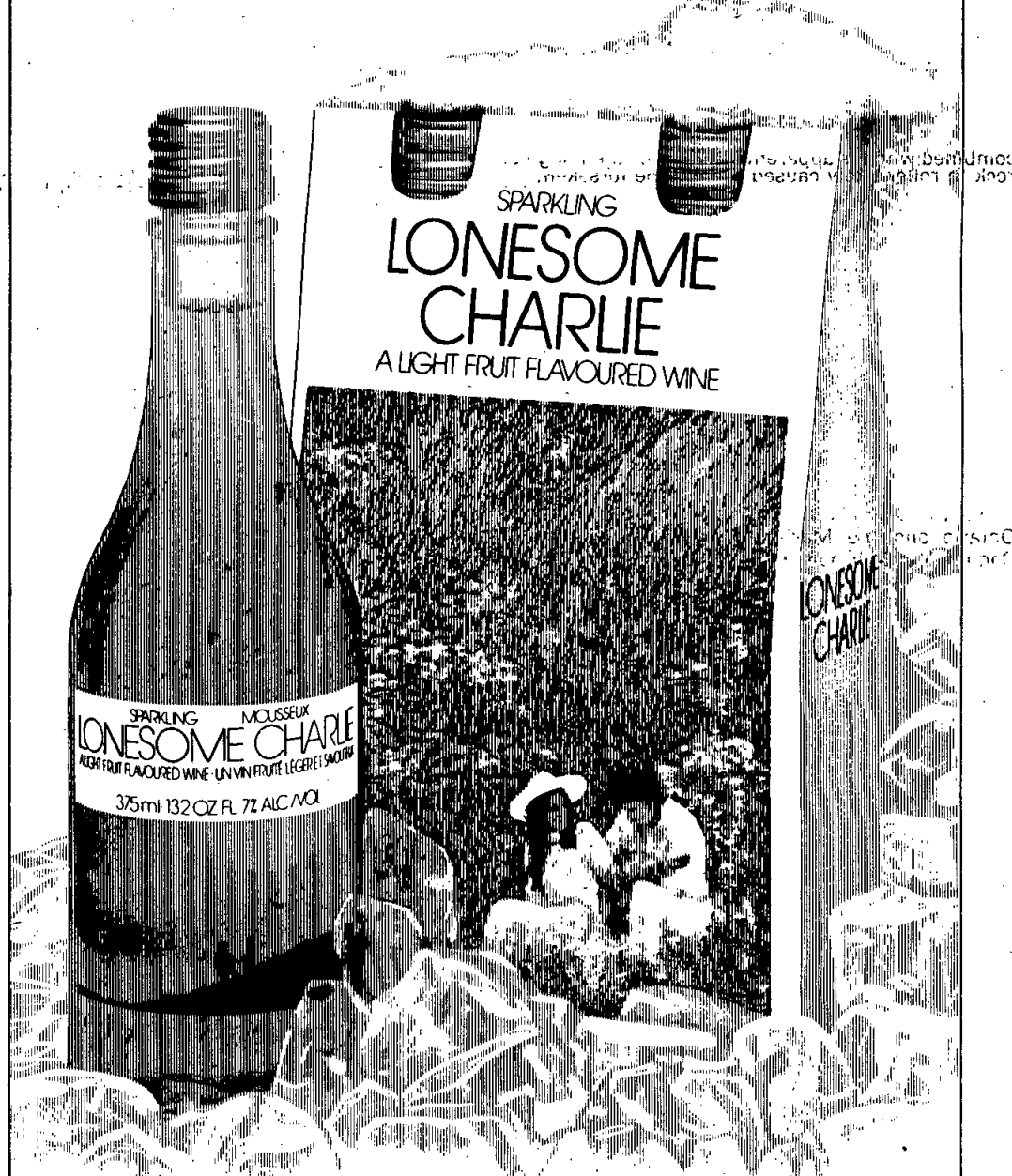
It's just as well, I guess, I'm not a connoisseur of fine foods, anyway. The best I can do, then, is to give you some advice on where to find information on restaurants. Two local publications that contain restaurant reviews are 'Vancouver' and 'Dick McLeans Guide'. Both will give you an idea of what to expect by way of service, quality, menu and prices. For a more accurate indication of cost, a third publication, printed once a year, is the 'Vancouver Gastronomic'. In this book are printed the actual menus of over 75 Vancouver area restaurants.

Armed with all this pertinent information you should be ready to tackle any fine eatery within 20 km.

If all else fails, however, you can always pop over to the Villa. People keep telling me they have the best cheeseburgers available this side of Lethbridge.



## Lookin' for a friend?



## LONESOME CHARLIE

the wine that's a tried and true good friend  
...light, fruit-flavoured and very, very refreshing.

Ste-Michelle Wines



## COUNCIL BRIEFS

### EXECUTIVE MEETING BRIEFS

The executive meeting of October 12th allowed LINK staffers to catch up on lost sleep. And then it got boring.

In response to a question from the LINK, VP Internal Tom Friedrich replied that he was not sure if the administration was planning to hold exams in the SAC cafeteria this year, but remarks from the administration have led him to believe that no exams will be held there.

In previous years, the SAC cafeteria has been closed down during final exams and converted into an exam hall. This has prevented students from using it for its originally intended purpose.

The Student Association's good intentions have floundered in a sea of adversity...or should we say apathy? The first Student Association Opinion Poll—printed in two LINK issues—failed to arouse any appreciable response. A total of 120 responses have come in so far. Tom Friedrich noted that at least 400 returned forms are needed to get valid results.

The Executive appears to be happy over early sales of the new BC Hydro Bus Pass. After only a few days of publicity, over 50 students have forked out 46 zords

apiece for the privilege. See the ad in this paper.

You may remember the LINK mentioning that negotiations were about to start on combining the Student Association and Library Cards. The Administration showed how interested they were in the meeting by cancelling out of the first one. Ho-hum.

Timetabling has agreed to make the changing of rooms easier. If all of your class and instructor agree to the change, forward a description of the move to your department head. If he approves it, he will send it to timetabling. If everything goes right, who knows?

Warren Allan, your Activities Rep, has got some goodies for all you boys and girls. Perennial BCIT favourites McLean and McLean and the Heartaches Razz Band are currently negotiating performances at BCIT. Remember them? (think gross)

How do you lose a Sandwich Preparation Table? Blake Cowan, the SA Treasurer, hopes he never finds out. Delays in equipment arrival have forced postponement of the opening of the Growlies food outlet in the SAC Cafeteria. Blake says, with fingers crossed, that just maybe by the end of the month it'll be in operation.

## BCIT Radio

By JEFF VENIOT  
2nd year radio

After a lot of red tape, BCIT radio is finally broadcasting to the SAC. During the summer the new radio equipment was moved in, and it took BC Tel a while to move the line. That's all behind us now and we're ready to play your favorite music, as well as give you all kinds of information about what's happening at BCIT.

The 2nd year radio students have been working on the station since the start of the school year, and although we're still waiting for more equipment, we'll do the best we can with what we've got. Listen to us from 8 am to 6 pm Monday thru Friday.

## Fall Health Fair

Medical Services is having its Fall Health Fair on October 25 in the SAC lobby from 11:30 am to 2:30 pm.

"Action B.C." will repeat their original success by bringing their fitness equipment, and nurses will have an area to check your weight, check blood pressure and hemoglobin—you may have tired blood and don't know it!

Come and find out if you are fit to withstand mid-term pressures and the usual Christmas rush. If you find you aren't, Medical Services will help you remedy your deficiencies.

## EXECUTIVE TALKBACK

### Underagers considered

As you are aware, the Liquor Administration has informed us that we are not allowed to serve liquor in any area where underage students are present. As a temporary measure to comply with regulations, all persons under 19 will have to leave the lobby and cafeteria when the pub opens at 4:30.

In order to continue liquor service in the lobby, and if liquor and fire inspectors will allow, a 48-inch wall divider will be constructed to divide the lounge and lobby area. When this is completed, underage students will once again be able to stay in the lobby area after 4:30. The pub bar will move to the new location in the cafeteria. Students wishing to drink will have to stay in the cafeteria or lounge if they are drinking.

When activities involving underage students (such as ballroom dancing) are occurring in the cafeteria, then no liquor will be allowed there. If an underage event is occurring in the lobby or lounge, then no liquor will be served there.

The school is purchasing new chairs and tables for the cafeteria. They should be arriving shortly. Along with this, a lounge area

with couches, carpeting and TV is to be developed in the cafeteria. By September 1979, all liquor service will be confined to the cafeteria. The room divider around the lobby lounge will be taken down and that lounge will be a common area for students 24 hours a day.

The Student Executive are trying to move on this issue as quickly as possible, but since so many different departments have to be consulted before work is done, these changes always take more time to complete than we would like.

As someone once said: "When everything is said and done, a lot more is said than done."

Thank you for your patience.

Here are the statistics on underage students:

| Month     | #of students under 19 | %  |
|-----------|-----------------------|----|
| September | 749                   | 19 |
| October   | 689                   | 17 |
| November  | 614                   | 15 |
| December  | 542                   | 14 |
| January   | 510                   | 13 |
| February  | 459                   | 12 |
| March     | 404                   | 10 |
| April     | 352                   | 9  |
| May       | 302                   | 8  |

—Fiona Fraser

## Annual General Meeting of the Student Association will be held on October 18, 1978 in the SAC Cafeteria from 12 noon until it ends.

### Agenda

Be sure to attend!!!

### President's Report

### -status of Student Association

### Treasurer's Report

### -from the audit for the year ended June 30, 1978.

## HOUSING CORNER

By Sally de la Rue Browne

### WHAT IF MY ACCOMMODATION IS NOT COVERED BY THE LANDLORD & TENANT ACT?

Unfortunately, in a situation where accommodation is not covered by the LANDLORD & TENANT ACT, both the landlord and the tenant have very few rights or obligations by law.

The only legislation that covers such accommodations is the INN-KEEPER'S ACT. In part, it states that the landlord has, with certain restrictions, a lien on the goods of the tenant for unpaid rent or board. Also, it states that the landlord may expel any tenant's guest from the premises "whom he deems undesirable". There are no specific rules for giving notice, security deposits, standards of maintenance, rent increases, etc.

However, if a tenant makes an agreement with a landlord about giving notice, etc. at the time he or she enters the premises, it is

likely that the tenant will be legally required to comply with the terms of the agreement; and the landlord may attempt to sue the tenant in Small Claims Court for damages should breach of that contract occur.

If you are in this kind of a housing situation and the landlord causes you inconvenience or damage, or refuses to pay money owed, you may sue in Small Claims Court. The cost is \$20, but this cost will likely be awarded to you if you win the action.

In Vancouver, the Small Claims Court is located at:  
**SMALL CLAIMS DIVISION**  
Provincial Court  
814 Richards Street  
Vancouver, B.C.

PHONE: 668-2466

Before you begin Small Claims Court action, it is strongly recommended that you discuss your situation with a law student in one of the free legal advice clinics.

PHONE: 228-5791

## The pub crawler

By ROB SLAVIK

This is the first weekly column about the SAC pub and dances, with information about what entertainment will be coming, how everything has gone and stuff about what's going on behind the scenes. This school year will see many changes in the pubs: the use of tokens all the time to speed up service at the bar, the open of our new bar location, draught beer, ladies' night discos and the coming of the red shirts.

So far this year we've had some excellent dances. Getaway continues to play to sold out audiences, Dr. Disco is back better than ever and we've found Rage a good rock 'n roll band (and the lead singer is quite alright, too).

### WHAT'S COMING UP

The SAC lobby is being divided into drinking and non-drinking areas (please observe the signs as to where you can have a beer and where you can't). We're concerned about underage people but there are some things to keep in mind.

The percentage of underage students changes each month

from about 17 per cent in October to eight per cent in May.

The lounge is the only comfortable spot in the school, so who do you inconvenience—17 per cent of the students or 83 per cent?

Name acts such as Burton Cummings, Cheech and Chong and Tower of Power are being considered. The Growlies food service and draught beer will be available soon. There will be open pub nites, with no live entertainment, good recorded music, backgammon, pool, TV, darts and other games and a friendly, relaxed atmosphere. There will be no cover charge.

Due to popular demand, the

supersuccessful first ever socializer (Ladies night) will be brought back. Look for them! (the nights, too.)

Entertainment to come includes Airshow, Rage, Getaway, Bowser Moon, Steelback and Dr. Disco.

If you have any ideas or suggestions let us know. Remember, it's your pub.

There will be blood-donor clinic in the SAC lobby today from 10:30 through 2:30.

Stop by and bleed a little. The donees (if you're a donor, they must be donees) are the Canadian Red Cross Society.

## Business Society meeting oct 17

Our next meeting is going to be on October 17, 1978, 5:45 p.m. in the SAC boardroom and all visitors are welcome. The meetings last a maximum of 2 hours and it's a way of finding out what's happening in the school.

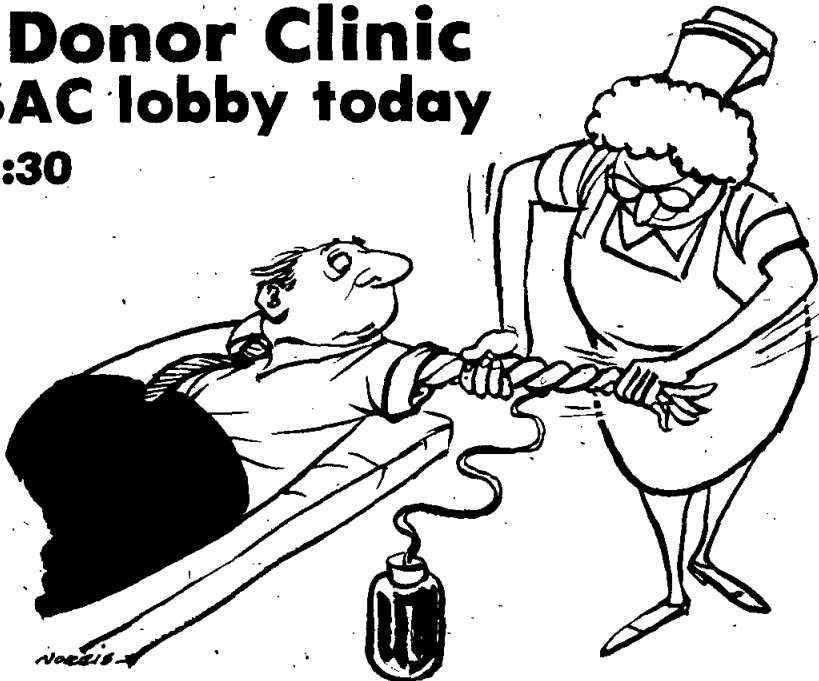
Right now we are in the process of looking for some interesting guest speakers to come onto campus and so, if you know of someone who you think would be interesting, please submit the

name, position or job, and telephone number to your Tech. Rep. I am also appealing for some suggestions as to what kind of subjects you would like to hear from guest speakers. Please note that the subject matter doesn't have to stick to Mercantile topics, it can be of a general topic that is of interest to the whole school. These suggestions should either be given to your Tech. Rep or dropped into my box in the SAC office.

# what's happening

## Blood Donor Clinic in the SAC lobby today

10:30 to 2:30



NORRIS - THE VANCOUVERIS

October 20 pub

October 21 Dr.Disco Admin Man...

October 27 Hallowe'en Ball

\$1.00 with costume

\$2.50 without

prizes prizes

October 28 Homecoming Dance

\$1.50 advance



**STEELBACK**

THEATRE

**129**

presents

SEPT 27 ROCKY

OCT 11 LAST TANGO IN PARIS

OCT 25 SILVERSTREAK

NOV 8 THE LAST WALTZ

NOV 22 'OH GOD!'

DEC 6 NETWORK



DOORS OPEN 11:45 a.m. ★ THEATRE 129 ★ FREE

## BUS PASS!!!

**UNLIMITED USE OF HYDRO  
BUSES FOR OCTOBER 15 to  
DECEMBER 31, 1978 \$46**

**ON SALE OCT 10-27  
ONLY**

No sales after these dates.  
Cash or certified cheque only

The bus pass is available from  
your Student Association  
offices 5 days a week.

Sales will also occur in the  
SAC Boardroom on  
Wednesday Oct 11, 18 & 25.

**Student ID required.**

EDUCATIONAL PASS  
BCIT DAVID SHERWOOD  
VALID UNTIL 714791019

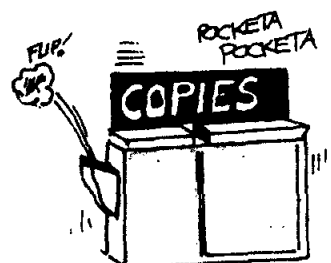
3 DEC 78

FOR ONE  
B.C. HYDRO  
TRANSIT ZONE  
CERTIFIED

19052

**RIDE A BUS**

**Sprint  
shop**



'Come see us  
in the SAC'

**SKI DAY**  
November 1st is Ski Day. This  
year's sponsor will be Labatts.  
Some of the activities we are  
working on are:  
—Displays by manufacturers, lo-  
cal ski mountains, etc.  
—Pre-season ski warm-ups.  
—Trampolinists.  
—Feature ski films.  
—Door prizes.  
—Student ski swap.  
and much more!!!  
If you are interested in selling  
or trading your ski equipment,  
dust it off and get it ready for **SKI  
DAY**, it's coming up soon.

## RECREATION

### Intramurals

By Les Bjola

So, you don't think Bears have feathers, but I don't see what that has to do with the fact that it takes 4,721,622,431.5 pancakes to cover the dark side of the Moon.

Intramurals were certainly not in the dark, but once again blessed with another day of Indian Summer. The first annual Turkey Trot was held last week with a moderate turnout of 21 runners or 42 running shoes—who tested their guerdination ability on a three quarter mile or 1.2 km. Fitness Trail. There were several novel approaches to pace the track but the most unique had to be Graham Fane's 'Great Root Beer' run. Alas, it was not enough to beat the running expertise of George Novotney who was within 6.4 seconds of his predictions, Nigel Dawson 7.3 sec., Cathy Scott 8.6 seconds and 4th went to Debbie Smith 9.2 seconds. Good work you turkeys! A fitting end to the trot, Wally Rowan trotted from Super Market to Super Market looking for that elusive turkey—but there were none to be found. So, a fitting revision to this years title 'First Annual Piggy Trot'. There is talk of this being a bi-annual event—stay tuned for more on that—probably in the Spring.

**Basketball**—due to National Turkey Day there was no basketball last week, consequently, nothing to report—Oh, I can't know.

**Flag Football**—quite incredible! Wally goes to the trouble of setting up an additional league because there was so much interest and what does he get for

his efforts? **TWO DEFAULTS!** Now that's not performance, c'mon guys—get with it!!

In the 'A' league a lot of bashes and bruises came out of the Op Man trouncing of Mechanical 21-7 and Building upset Forestry 10-0. Keep up the great action team.

**Volleyball**—on the Spike Scene we had hoped for a defaultless day but no such luck—Hotel Motel 1 let us down. Oh well, maybe next week. Current standings are posted outside the Gym but next week point positions will be in the LINK. There is great enthusiasm on the courts to compliment the great action. Keep on spikin'.

**Co-Ed Hockey—GIRLS-GUYS-LADIES-GENTLEMEN**—one last try. Does anyone want to play co-ed hockey (no bodychecking—no slapshot)? On Wednesday Oct. 18 there will be a skating and look at anyone interested at 12:30 pm on the Green Rink at 4 Rinks, 6501 Sprott Street, Burnaby. We cannot continue this activity with only 12 players (2 girls). So come out and give it a shot. Guy Lafleurs are not permitted in our coed league. If this folds we will have skating sessions till expiration of contract on Dec. 1st. This would be free mixed skating from 12:30-1:30 p.m. Wed. Oct. 25, Nov. 1, 8, 15, 22, 29. So watch for news next week. Bring your skates.

**Mens Wed. Hockey League**—schedule amended to read: Team #1 Ops Man (King) and Hotel/Motel (Korman) combined. Team #5 Mining (50A Daum). Any games can be arranged for new teams to replay on their own, standings will be updated.

meeting, Room D202 at 12:00. Your contact for sky-diving is Mike Rhodes (Survey).

**Contemporary Dance**—modern ballet, jazz and interpretive Monday and Thursday eves., 7:15-8:15 pm in the SAC Activity Room. Register in Campus Life trailer. Fee is \$10.00.

**Scuba**—this is an active club with over 30 members. Chairman is Brian Trueman, for information call Maquinna Residence 4344124 (and leave message). Watch the notice boards for meetings.

**Rhythmic Gymnastics**—your contact for this club is Sherri Clarke. She is also instructing the Trainers Club. You can find Sherri's office outside the Activity Room near the tennis courts.

**Glass-Cutting**—the starting date still has not been set. For information and registration call Gerry Berkenpas, Building Technology Instructor.

**Motorcycle Club**—watch notices for meetings and activities. For information contact Tom Friedrich in the SA Office.

**Kung-Fu**—Kick-boxing style. Tuesdays and Fridays at 5:00 pm in the SAC Activity Room (started Tuesday, Oct. 17th). Register at the Campus Life Trailer. CSA student cost \$5.00, non-member \$8.00, (limited to 30 students). Learn the art of self-defense—physical meditation.

**Ballroom Dance**—Off to a great start with 80 people in attendance the first night. Registration Thursday, Oct. 19 at 7:00 pm with class to start at 7:30 pm same eve. Contact Instructor Ken Kajiwara of E & E, room 394 for further info. Cost \$18.00 for 8 sessions. Register and pay at the door of the SAC Cafeteria. See you there!

**Aerobic Fitness**—Mon., Wed., & Fri. a.m. 7:15-8:15 in SAC Gym. There are now 52 members involved. Still room for more! Note there is no parking problem at this early hour so that's all the more reason to be here early—its a good way to wake up and get into great shape, too.

#### NOTE TO ALL Coaches

**MANAGERS:** Make sure now that your teams are complete and that all have been legally registered and paid all their fees.

### Super Hockey

**Super Hockey League**—all teams and players amend your schedules to read: 11:50 am instead of 12 noon for Wednesday practice times. 1 pm-2pm games remain as per schedule. 12:50-1 pm will be used for a scrape. No players on the ice when Zamboni is in operation.

Any experienced players not necessarily in shape but interested in trying out for Super League teams, drop by the Red Rink between 12 and 2 pm and talk to the coaches. Again we state "this league is organized to give the individual with good hockey skills the opportunity to play with players of his calibre". There is no Cougar team this year that served this purpose in the past. Also, this uses the funds for a larger portion of students and spectators.

#### The EQUIPMENT SALE OF THE SEASON

Last Friday, the Athletic Department offered BCIT students and staff an incredible deal—surplus and obsolete 'Cougar' hockey equipment at super bargain prices. The normal procedure for the disposal of BCIT equipment requires a major public auction.

However, the Athletic Department was given special permission to release this equipment to help provide gear for the Super Intramural Hockey League, which began competitive play on the weekend. The equipment became surplus following the recent decision of several BC colleges to withdraw from intercollegiate competition in the sport which has become excessively expensive. The demise of the varsity hockey programme has led to the formation of Super-Intramurals and so the Athletic Department chose to offer students the equipment which would otherwise collect dust for years.

Derk Swain, Athletic Manager

**WANTED: a typesetter**  
we need someone who can  
typeset to come in on  
Saturdays.

We are desperate

We also need some reporters.

come down to the

Publications Office in the SAC.

### Plants missing

Four indoor tropical plants valued at \$50 were taken from Suite 'D' of Chilcotin House on the night of September 23.

Private efforts to locate the missing plants have failed. We now ask for your help.

Any information regarding this very uncool ripoff would be

### BCIT Band

#### BCIT EXTRA-CURRICULAR MUSIC PROGRAM

There are still openings in the pop/jazz choir—contact Greg Marquette through the SAC Office.

The BCIT "A" Band is full, however, there are still openings for trombone and trumpet and rhythm section players—contact Greg Marquette through the SAC Office.

If you are a musician or singer don't miss out on these things—there is little enough cultural activity at this school as it is—come out and get involved!

Gregory Marquette

gratefully appreciated. Contact Val Karpinsky at the Maquinna Housing office in Salish House.

### Bike club

The BCIT Motorcycle Club is holding a Poker Run for all motorcyclists on Sunday, October 22. Meet in the SAC at 10:30 am and pay a \$2 registration fee. Cash prizes for the two highest and one lowest poker hand.

The route covers 100 miles and five checkpoints around Vancouver, North and West Vancouver and Burnaby. If you don't know what a Poker run is, come out and see.

#### CHANGED YOUR ADDRESS

Change of Address forms will be available in the Admissions Center for the next five days. Please pick them up at the receptionist's counter in the Admissions Center. Addresses are required for the student directory, mailing out of marks, Manpower Department and Counselling Department.

G.N. (Jerry) Lloyd.

### Clubs

By SUSAN SNYDER

**I.V.C.F.**—has about 30 to 35 members. They meet weekly and have regular guest speakers. Your contact for information is Perry Daciuk, 936-3670. This week "Sully Speaks". Today Mildren Sullivan (Inter-Varisty Staff) will be speaking for IVCF in Room 220 at 12:30. Everyone is welcome.

**Belly Dance**—is an ancient art form that is non-restrictive and once you achieve the techniques, you can develop your own style. Guys, too! There are about 10 members now and we have room for about 8 more. Contact your instructor Julie Koe 876-9461. Classes are held Wednesdays, 7:15-8:15 pm in the SAC Activity Room. Register in the Campus Life Trailer.

**Photography**—started two weeks ago and it looks like 13 members already. For meetings and info contact Gerry Paulson in the Physics Department.

**Outdoors Club**—if you're interested, contact Barbara Stewart at meetings or Ian McGillivray 988-3955. Meeting today at 11:30 Room D207 (slide show). Membership fees of \$1.00 will be collected today.

**Sky-Diving**—9 people jumped last Sunday and another class is being organized for Oct. 29. Five people have already registered. The fee for your 1st jump is \$65.00 which should be paid today at the

### The sporting thing

By LARRY STONE

Vancouver's sportscasters are falling over themselves these days, as the Lions are on a one game winning streak and the Canucks won their season opener. Both in the same week—shocking!

The BC Lions finally put their pieces together and downed the Edmonton Eskimos 15-3. The Lions have been plagued with injuries; Head Coach Vic Rapp hasn't known from one week to the next who will be playing where, but Saturday a maligned offence and a patchwork defence combined outstanding efforts to halt a six game losing streak, just two shy of Toronto's eight game drought.

All excuses aside, it has been a long time coming. For six games the Lions' dressing room has been a scene of dismay, shock and bereavement.

First it was the mistakes of rookies that stole two ties from the jaws of victory, then it was the veterans breaking down at key times. Then no one could explain what was going wrong and the Lions found themselves in a six game tailspin. They played well but not well enough to win. The dressing room was a morgue and practices lacked spirit; they knew they were capable of playing better than they had done. It was frustration epitomized [it was,

says the editor, redundant too].

In Edmonton everyone did their job and did it well, so the victory was well deserved.

The Lions have to go the rest of the way undefeated while Calgary has to drop three of their four remaining games to make the playoffs. It won't be an easy task for the Lions. First they play Ottawa this Saturday at Empire Stadium, then they play in Toronto, and wrap up the season at home Saturday November 4 against the Eskimos.

This Saturday's game against the Roughriders will have some interesting matchups; the Roughies have two ex-Lions in safety Ken Downing who happens to lead the Eastern Conference in interceptions and [editor's note: we couldn't find the rest of that sentence].

Was this reporter's dark horse selection to make it with the Lions on his special team's play. The other former Lion is middle linebacker Charles Anthony who was ousted by Sam Britts. It will be interesting to see how those two play.

On the other side of the PNE grounds...

The Canucks shocked the Colorado Rockies 8-2 last Wednesday. It was the first time Vancouver has downed the Rockies on Coliseum ice. Coach Harry Neale was pleased with several points of

the game. He felt the defence was adequate and the veterans started to shake the numbing effects of training camp.

There were several standouts in the game. What can be said about Thomas Gradin that hasn't been said already? Or for that matter the line of Gradin, Fraser and Smyl. As for Smyl he is turning into one of Neale's favorite players the way he crashes the boards and opponents. Billy D., otherwise known as Billy Disappointment until now showed signs of becoming Billy Delight. After the game goaltender Gary Bromley said all he was concerned about was stopping the first shot, which he did, not to mention many others after that.

The Canucks led 2-0 after one period and 7-0 after two. As the night wore on anyone with a heart couldn't help but feel sympathy for Colorado goalie Doug Favell, who faced one yellow wave after another with little support from his defence.

As for the Canucks cautious optimism is permissible but one game does not a season make. While the Canucks showed signs of being a contender they are still a few players away from being a power house. If the defence holds, the vets come around and the rookies keep improving. It could be a very entertaining season for hockey fans in Vancouver.

#### OPTOMETRIST

J. W. Russell, B.Sc., O.D.

OLD ORCHARD SHOPPING CENTRE

WILLINGDON AT KINGSWAY  
Ph. 437-4515